

BETTER PREPARED TO RESPOND



2026 FULL-LINEUP
CATALOG



FIRSTTACTICAL.COM

100% COMMITTED TO
PUBLIC SAFETY PROFESSIONALS

BUILT FOR THE CALLI

Every day, First Responders stand between order and chaos. Their lives are shaped by discipline, sharpened by experience, and steadied by purpose. Their work demands more than strength; it requires a depth of preparedness few can understand.

We honor that reality with gear forged through intention. Designed to withstand the hours, the weight, and the consequences of real work. Not to be worn lightly, but to be relied upon fully.

Every feature, form, and function is meticulously crafted with the understanding that lives, communities, and futures depend on the people who wear it.

We exist to elevate their capability, strengthen their confidence, and enhance their performance. So that when the moment comes, they are **Better Prepared to Respond.**

Share your pics and follow us @firsttactical



TABLE OF CONTENTS

LE APPAREL	4-23
FIRE & EMS APPAREL	24-35
OUTERWEAR	38-49
ACCESSORIES	50-53
BAGS, PACK, & POUCHES	54-69
FOOTWEAR	72-75

NG



BETTER PREPARED TO

EQUIP



ALSO IN WOMEN'S FIT



142501
INTERNAL KNEE PADS
(BLACK)

V2 TACTICAL PANT

MOVE LIGHT. STRIKE HARD.

Agile, equipped, and performance-focused, this pant is precision-engineered for speed and carry efficiency. Keeping you mobile, stable, and ready to respond.



FABRIC



2-WAY STRETCH



DOUBLE-DYED



FINISH



COMPLIANT

019 Black	036 Wolf Grey	055 Khaki	181 Coyote Brown	182 Kodiak Brown
610 Ranger Green	729 Midnight Navy	812 Spruce Green	830 OD Green	

114011 MEN'S V2 TACTICAL PANT
124011 WOMEN'S V2 TACTICAL PANT

FEATURES

- 6.4 oz., 65% Polyester / 35% Cotton micro ripstop blend
- Knee to knee running gusset for maximum movement
- Geometrically shaped internal knee pad pockets
- 360 Degree comfort stretch waist
- 2 Exterior magazine/utility pockets
- Triple needle stitched on all main seams
- Hand pockets reinforced with nylon
- Clip garage secures your knife clip
- Prym® snap/YKK® zipper
- PFAS Compliant

Men's Waist: 28-60 Length: 30-36 (hemmed)
 & Unhemmed Available
 Women's: 0-28 Regular, 0-28 Tall

V2 TACTICAL SHORT

115000 MEN'S V2 TACTICAL SHORT
125000 WOMEN'S V2 TACTICAL SHORT



CLIP GARAGE



CARGO POCKET SYSTEM



INTERNAL KNEE PAD POCKETS

019 Black	036 Wolf Grey	055 Khaki	181 Coyote Brown
610 Ranger Green	729 Midnight Navy	830 OD Green	

FEATURES

- Same features as V2 Tactical Pant (without knee pad pockets)
- 9" Inseam
- PFAS Compliant

Men's: 28-60 / Women's: 0-28

BETTER PREPARED TO

PURSUE



V2 RESPONDER SHIRT

BALANCED & BREATHABLE

Designed to serve as a standalone or layered piece, ensuring versatile use across different climates and operational needs.

V2
FABRIC


2-WAY
STRETCH


DOUBLE-
DYED

DWR
FINISH

TAA
COMPLIANT

019 Black

065 Silver Tan

729 Midnight
Navy

830 OD Green

LONG SLEEVE

111031 MEN'S V2 RESPONDER SHIRT

121031 WOMEN'S V2 RESPONDER SHIRT

SHORT SLEEVE

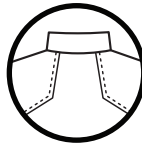
112024 MEN'S V2 RESPONDER SHIRT

122024 WOMEN'S V2 RESPONDER SHIRT

FEATURES

- Body: 100% Polyester anti-snap jersey with moisture wicking and antimicrobial finish
- Sleeves and collar: 4.5 oz, 65% Polyester/35% Cotton, 2-way mechanical stretch micro ripstop
- YKK® zip up collar
- Zip-secured sleeve pockets with loop overlay and built-in pen pocket
- PFAS COMPLIANT

Men's: S-4XL Regular, L-4XL Tall
Women's: XS-XXL Regular



SPLIT BACK YOKE
FOR FULL RANGE
OF MOTION

ALSO IN WOMEN'S FIT

MAXIMUM MOBILITY FOR UNRESTRICTED MOVEMENT

BETTER PREPARED TO

ADAPT



A2 PANT

BETTER FLEX, BETTER FEEL

ALSO IN WOMEN'S FIT

With superior stretch, durability, and clean, professional styling, this pant is ready to move when you are.



FABRIC



2-WAY STRETCH



DOUBLE-DYED



FINISH



COMPLIANT

019 Black

036 Wolf Grey

055 Khaki

181 Coyote Brown

182 Kodiak Brown*

610 Ranger Green

729 Midnight Navy

830 OD Green

114038 MEN'S A2 PANT

124038 WOMEN'S A2 PANT

FEATURES

- 6.5oz., 67% Polyester / 33% Cotton canvas blend
- Abrasion-resistant canvas weave
- 360 Degree comfort stretch waist
- 6 Mesh pockets for breathability
- 2 Discrete zippered cargo pockets with a rain cover to shield belongings from the elements
- Oversized utility pockets for large cell phone storage
- 7 Fused belt loops with 4 bartacks to prevent kit from pulling
- Knee to knee running gusset for maximum movement
- Clip garage secures your knife clip
- PFAS COMPLIANT

Men's Waist Size: 28-58 Length: 30-36 & Unhemmed

Women's Waist Size: 0-28 Regular, 2-28 Tall

* 182 Kodiak Brown available April 2026

A2 SHORT

Oversized utility pockets and discreet zipper cargo pockets for all your gear

115007 MEN'S A2 SHORT

125007 WOMEN'S A2 SHORT



019 Black

036 Wolf Grey

055 Khaki

181 Coyote Brown

729 Midnight Navy

830 OD Green

FEATURES

- Same features as A2 Pant
- 9" Inseam
- PFAS COMPLIANT

Men's: 28-54 / Women's: 0-20



BETTER PREPARED TO

DEFENDER



142504
DEFENDER ELBOW PADS



142502
DEFENDER KNEE PADS

ALSO IN WOMEN'S FIT

DEFENDER SHIRT & PANT

ELITE GEAR FOR ELITE MISSIONS

Designed for those who demand the absolute best, featuring unparalleled durability, advanced mobility, and a professional look for high-stakes operations.

- 019 Black
- 036 Wolf Grey
- 181 Coyote Brown
- 729 Midnight Navy
- 830 OD Green



2-WAY STRETCH



FINISH



COMPLIANT

LONG SLEEVE

- 111004** MEN'S DEFENDER SHIRT
- 121004** WOMEN'S DEFENDER SHIRT

SHORT SLEEVE

- 112017** MEN'S DEFENDER SHIRT
- 122017** WOMEN'S DEFENDER SHIRT



FEATURES

- YKK® zip up collar
- Split back yoke for full range of motion
- Zip-secured sleeve pockets with loop overlay and built-in pen pocket
- Geometrically shaped external elbow pad pockets
- Snag proof running side gussets
- No melt-no drip sleeves, yoke, and collar
- PFAS COMPLIANT

Men's: S-4XL Regular, L-4XL Tall
 Women's: XS-2XL Regular



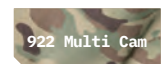
27
POCKETS

- 114002** MEN'S DEFENDER PANT
- 124002** WOMEN'S DEFENDER PANT

FEATURES

- Comfort flex action waist
- Reinforced belt loops at sides and center back
- AR mag/tool, knife clip, and tourniquet pockets
- Venting throughout
- Knee to knee running gusset for maximum movement
- Geometrically shaped external knee pad pockets
- PFAS COMPLIANT

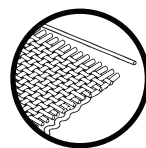
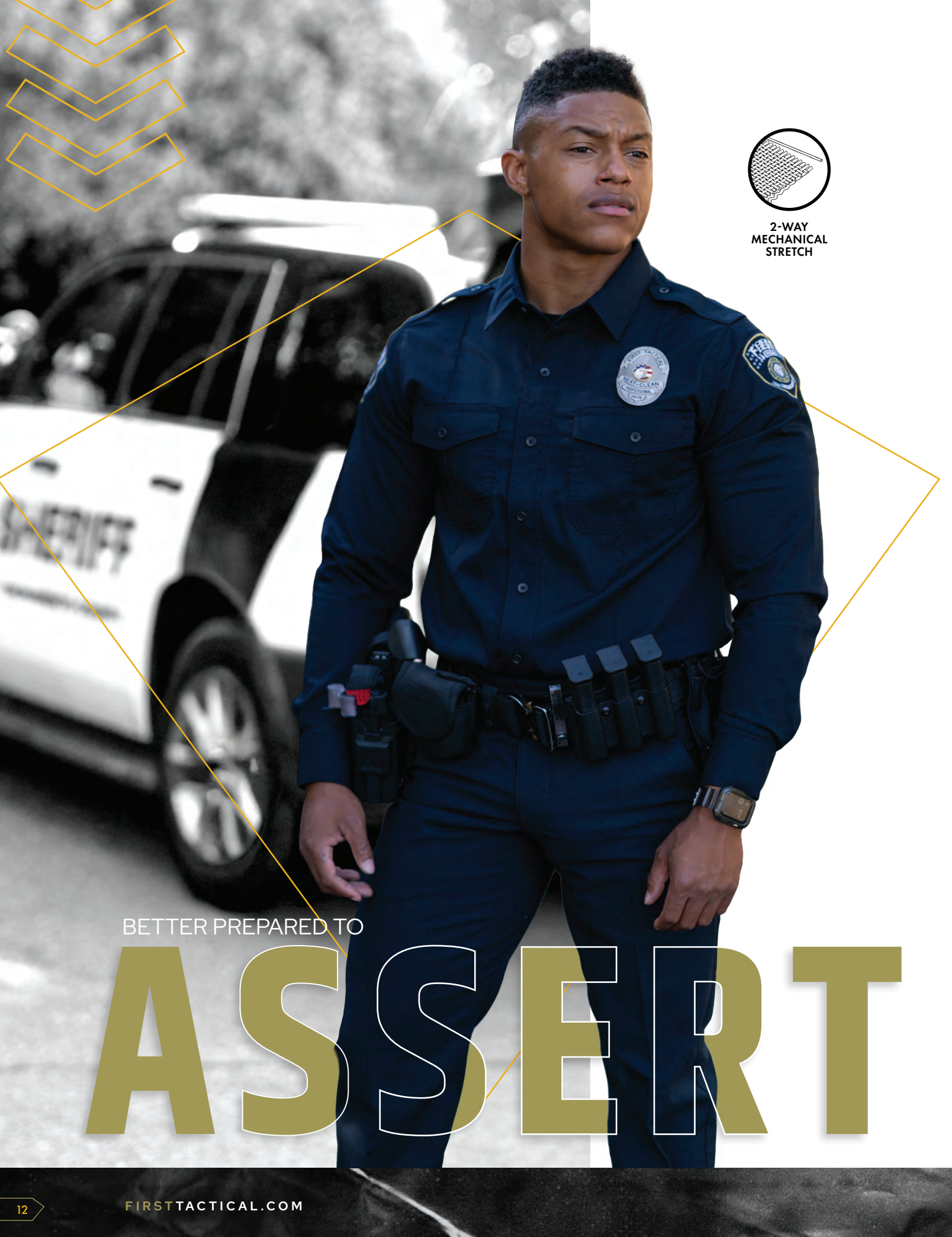
Men's Waist: 28-44, Length: 30-36, 46-54 Unhemmed
 Women's: 0-20 Regular, 2-20 Tall / 019 Black, 830 OD Green, 729 Midnight Navy Only



MULTI CAM

111004MC MEN'S DEFENDER LONG SLEEVE SHIRT - MULTICAM®
 S-4XL REGULAR, L-4XL TALL

114002MC MEN'S DEFENDER PANT - MULTICAM®
 Men's Waist: 28-44, Length: 30-36, 46-54 Unhemmed



2-WAY
MECHANICAL
STRETCH

BETTER PREPARED TO

ASSERT

V2 PRO DUTY™ UNIFORM SHIRT

EVERYDAY CLASS A

Designed for a commanding and polished look, combining traditional uniform style with modern comfort and practicality.



FABRIC



2-WAY
STRETCH



DOUBLE-
DYED



FINISH



COMPLIANT

010 White

019 Black

065 Silver
Tan

484 French
Blue

729 Midnight
Navy

LONG SLEEVE

111011 MEN'S V2 PRO DUTY UNIFORM SHIRT

121011 WOMEN'S V2 PRO DUTY UNIFORM SHIRT

SHORT SLEEVE

112001 MEN'S V2 PRO DUTY UNIFORM SHIRT

122001 WOMEN'S V2 PRO DUTY UNIFORM SHIRT

FEATURES

- 2 x 2mm micro ripstop with 2-way mechanical stretch
- Double dyed fabric locks in the color
- Durable melamine faux button front placket with hidden YKK® locking zipper
- No curl collar integrated collar stays and satin lined neck band
- Sewn in epaulets and stitched pintucks
- Mic access at side seams
- Hook/loop chest pockets
- Mesh lined back yoke for ventilation
- Camera loop and badge tab kit included
- PFAS COMPLIANT

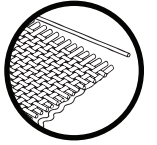
Men's: S-6XL Reg, S-2XL Short, L-6XL Tall

Women's: XS-3XL Regular



ALSO IN WOMEN'S FIT





2-WAY
MECHANICAL
STRETCH



BETTER PREPARED TO

COMMAND

V2 PRO DUTY™ UNIFORM PANT

NEAT, CLEAN, & PROFESSIONAL

Combines the traditional Class A appearance with the modern functionality needed for fieldwork, giving professionals a versatile uniform solution.



ALSO IN WOMEN'S FIT

019 Black

610 Ranger Green

729 Midnight Navy

812 Spruce Green

830 OD Green

114041 MEN'S V2 PRO DUTY™ 6 POCKET PANT
124041 WOMEN'S V2 PRO DUTY™ 6 POCKET PANT

FEATURES

- 360 Degree comfort stretch waist with a silicone gripper keeps your shirt securely tucked
- Welted zipper cargo pockets with lanyard loops
- Hand pockets reinforced with nylon
- Welted back pockets with button closure
- Knee to knee running gusset for maximum movement
- Triangle hand pocket bartack with coin holder stitching inside pocket bag
- Permanent interior Supercrease® Lintrak™ to maintain a professional appearance
- PFAS COMPLIANT

Men's Waist: 28-44, Length: 30-36, 28-54 Unhemmed
 Women's: 0-28 Regular, 2-28 Tall, 0-28 Unhemmed

019 Black

729 Midnight Navy

830 OD Green

114018 MEN'S V2 PRO DUTY™ UNIFORM PANT
124018 WOMEN'S V2 PRO DUTY™ UNIFORM PANT

FEATURES

- Same features as V2 Pro Duty™ 6 Pocket Pant minus the zippered thigh pockets
- PFAS CCOMPLIANT

Men's Waist: 28-44, Length: 30-36, 28-54 Unhemmed
 Women's: 0-28 Regular, 2-28 Tall, 0-28 Unhemmed



BETTER PREPARED TO

ENDURE



V2 PRO PERFORMANCE SHIRT

BETTER FUNCTION, BETTER FIELD USE

Designed for a commanding and polished look, combining traditional uniform style with modern comfort and practicality.



FABRIC



2-WAY
STRETCH



DOUBLE-
DYED



FINISH



COMPLIANT

ALSO IN WOMEN'S FIT

010 White

019 Black

036 Wolf Grey

055 Khaki

065 Silver
Tan

083 Nickel
Grey

182 Kodiak
Brown

484 French
Blue

729 Midnight
Navy

812 Spruce
Green

830 OD Green

LONG SLEEVE

111015 MEN'S V2 PRO PERFORMANCE SHIRT

121015 WOMEN'S V2 PRO PERFORMANCE SHIRT

SHORT SLEEVE

112012 MEN'S V2 PRO PERFORMANCE SHIRT

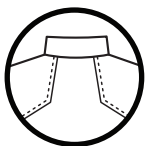
122012 WOMEN'S V2 PRO PERFORMANCE SHIRT

FEATURES

- No curl collar with integrated collar stay
- Split back yoke for full range of motion
- Button front placket
- Woven sleeves
- Anti-snag performance jersey body
- Running gusset for maximum movement
- Durable melamine buttons
- Internal ID bar
- PFAS COMPLIANT

Men's: XS-4XL Reg, L-4XL Tall

Women's: XS-XXL Regular



SPLIT BACK YOKE
FOR FULL RANGE
OF MOTION



NEW

PRO DUTY™ ARMOR COVERS

BETTER FIT, BETTER AUTHORITY

The PRO DUTY™ Armor Cover refines your soft armor system into a clean, professional presentation with climate-conscious comfort, modular load-out options, and patent-pending stability to support performance under pressure.



049 Black

729 Midnight Navy

FEATURES

- Shell Fabric: 100% Bonded Nylon, 3.7 oz. with DWR
- Lining: 100% Polyester anti-microbial mesh for breathability
- Internal Zipper Armor Sling keeps ballistic panels flat and centered
- Climate-control pockets allow insertion of hot/cold packs
- Dual stretch side panels with YKK® auto locking zippers
- Two chevron chest pockets with integrated pen slots
- Two large document pockets with hook-and-loop closures
- Spacer mesh collar minimizes neck fatigue
- Epaulets, mic/camera loop, and detachable rear pull-out ID panel

Sizes: Reg: XS-6XL, Short: XS-2XL
Tall: L-6XL, Extra Tall: L-4X





118010

PRO DUTY ARMOR COVER WITH MOLLE



118009

PRO DUTY ARMOR COVER

PRO DUTY™ ARMOR CASES **SMART CARRY STARTS HERE.**

Matched in fabric, color, and finish to the MOLLE PRO DUTY™ Armor Cover, these precision-built cases enable officers to shift essential gear from the hips to the shoulders, enhancing comfort, balance, and long-wear performance.

019 Black

729 Midnight Navy



180093

PRO DUTY HANDCUFF CASE - SINGLE



180094

PRO DUTY EXPANDABLE BATON CASE



180095

PRO DUTY MK IV SPRAY CASE



180096

PRO DUTY UNIVERSAL RADIO CASE



180100

PRO DUTY SCORPION RESCUE TOOL CASE



180097

PRO DUTY FLASHLIGHT CASE-MEDIUM



180098

PRO DUTY GLOVE CASE



180099

PRO DUTY IFAK CASE-MEDIUM



180107

PRO DUTY NARCAN CASE-SINGLE

V2 BDU SHIRT & PANT

TRADITION MEETS PRECISION

Get the rugged reliability of the traditional Battle Dress Uniform with the advanced comfort and flexibility of the V2 line.



019 Black

729 Midnight Navy

830 OD Green

LONG SLEEVE

111008 MEN'S V2 BDU SHIRT

121008 WOMEN'S V2 BDU SHIRT

SHORT SLEEVE

112009 MEN'S V2 BDU SHIRT

122009 WOMEN'S V2 BDU SHIRT

FEATURES

- Concealed button-down collar
- Hidden oversized document pocket
- Elbow pad pocket with exterior hook and loop closure
- Running gusset for maximum movement
- Mic access at side seams
- Mesh lined back yoke for ventilation
- Longer body stays tucked in
- Epaulets, mic loop, and badge tab package included
- PFAS COMPLIANT

Men's: XS-4XL Regular, L-4XL Tall

Women's: XS-XXL

114012 MEN'S V2 BDU PANT

124012 WOMEN'S V2 BDU PANT

FEATURES

- 360 Degree comfort stretch waist
- Mil-Spec cargo pockets with internal organizer
- Triple needle stitched on all main seams
- Hand pockets reinforced with nylon
- Knee to knee running gusset for maximum movement
- Geometrically shaped internal knee pad pockets
- Prym® snap/YKK® zipper
- PFAS COMPLIANT

Men's Waist: 28-44, Length: 30-36, 28-54 Unhemmed

Women's: 0-20 Regular - 2-20 Tall

ALSO IN WOMEN'S FIT

V2 TACTICAL SHIRT

HIGH PERFORMANCE

Designed to complement our best-selling V2 Tactical Pant, this shirt incorporates classic tactical elements with a modern fit.



FABRIC



2-WAY
STRETCH



DOUBLE-
DYED



FINISH



COMPLIANT

010 White	019 Black	036 Wolf Grey	055 Khaki
083 Nickel Grey	610 Ranger Green	729 Midnight Navy	830 OD Green



LONG SLEEVE

- 111006** MEN'S V2 TACTICAL SHIRT
- 121006** WOMEN'S V2 TACTICAL SHIRT

SHORT SLEEVE

- 112007** MEN'S V2 TACTICAL SHIRT
- 122007** WOMEN'S V2 TACTICAL SHIRT

FEATURES

- Concealed button-down collar
- Hidden oversized document pocket
- Running gusset for maximum movement
- Mic access at side seams
- Mesh lined back yoke for ventilation
- Longer body stays tucked in
- Epaulets, mic loop, and badge tab package included
- PFAS COMPLIANT

ALSO IN WOMEN'S FIT

Men's: XS-4XL Regular, L-4XL Tall, Women's: XS-XXL Regular
*122007: Women's: XS-4XL Regular Midnight Navy ONLY

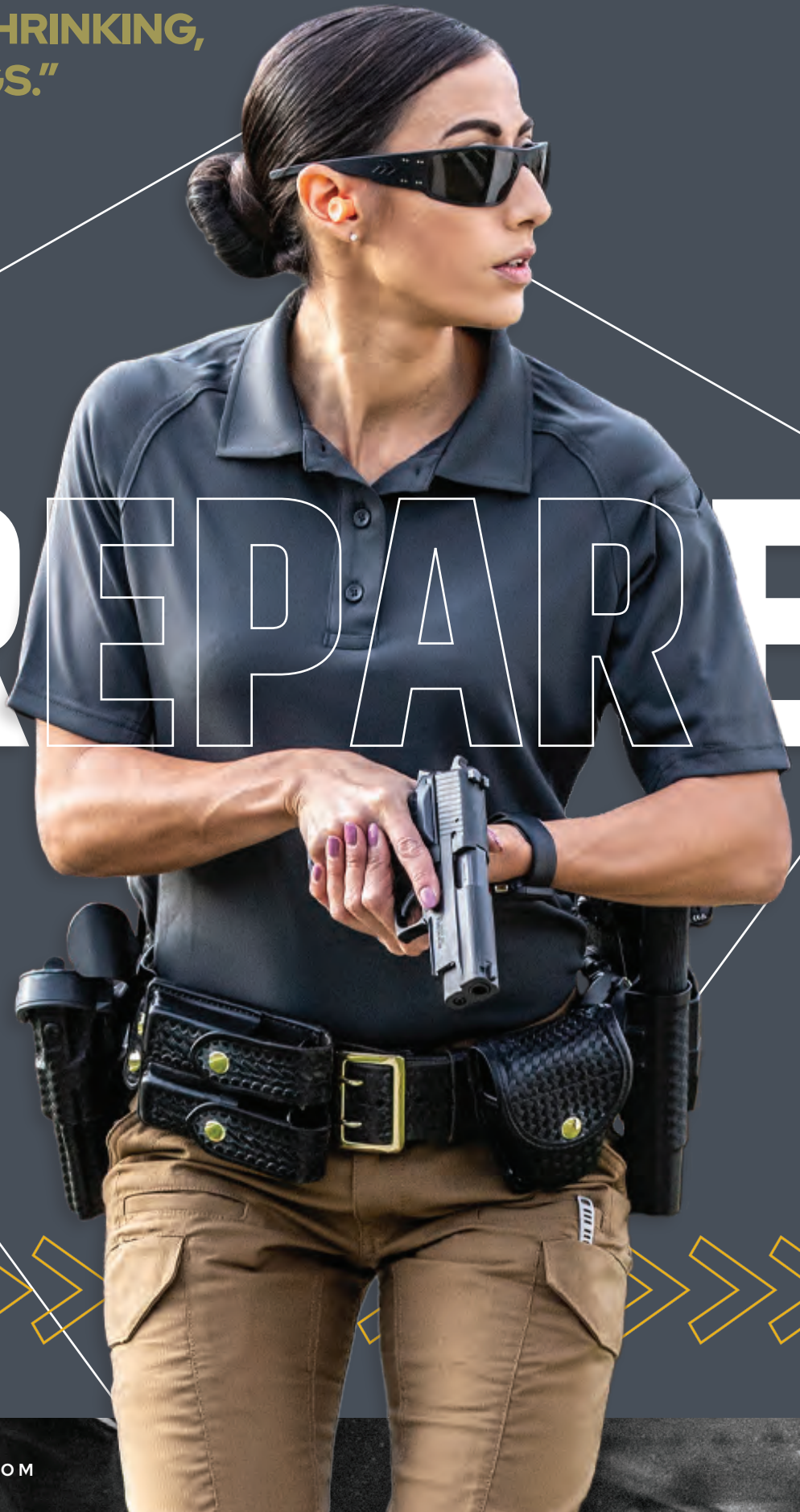


142500
INTERNAL ELBOW PADS



**"LOOKS PROFESSIONAL
ALL DAY LONG—NO
FADING, NO SHRINKING,
AND NO SNAGS."**

PREPARE



PERFORMANCE POLOS

BETTER COMFORT, BETTER DURABILITY

A hard-working, comfortable, and breathable polo that keeps you looking professional and feeling cool all day long, no matter where you are.

010 White	015 Asphalt	019 Black	036 Wolf Grey	055 Khaki	065 Silver Tan
400 Red	484 French Blue	691 Academy Blue	729 Midnight Navy	781 Medium Blue	812 Spruce Green
830 OD Green					



4-WAY
STRETCH



COMPLIANT

LONG SLEEVE

111503 MEN'S PERFORMANCE POLO

121503 WOMEN'S PERFORMANCE POLO

SHORT SLEEVE

112509 MEN'S PERFORMANCE POLO

122509 WOMEN'S PERFORMANCE POLO



FEATURES

- Lightweight, breathable 100% polyester jersey
- Fade, shrink, snag and wrinkle resistant
- Integrated collar stays to prevent curling
- Reinforced pen pocket
- Running gusset for maximum movement
- Longer body stays tucked in
- Mic loop at bottom of center front placket
- Anti-microbial finish
- Durable melamine buttons
- PFAS COMPLIANT

Men's: S-6XL Reg, Tall: L-6XL

Women's: XS-3XL



ALSO IN WOMEN'S FIT

"IT'S TOUGH, IT'S
BREATHABLE, AND
IT'S RELIABLE"

"THEY FIT COMFORTABLY,
AND FEEL GREAT!"

- ANNA B. WACO, TX

BETTER PREPARED TO

REACT



BEST SELLER

V2 EMS PANT

BETTER FIT, BETTER FUNCTION

Purpose-built EMS pants with reinforced knees, stretch fabric, and specialized pockets for ultimate performance under pressure.



FABRIC



2-WAY
STRETCH



DOUBLE-
DYED



FINISH



COMPLIANT

ALSO IN WOMEN'S FIT

019 Black

729 Midnight
Navy

114013 MEN'S V2 EMS PANT

124013 WOMEN'S V2 EMS PANT

FEATURES

- 360 Degree comfort stretch waist
- Hand pockets reinforced with nylon
- Knee to knee running gusset for maximum movement
- Large capacity tool organizer cargo pocket with additional nylon reinforced pockets
- Geometrically shaped internal knee pad pockets
- Lower leg pockets with hook/loop flap closure
- Prym® snap/YKK® zipper
- PFAS COMPLIANT

Men's Waist: 28-44, L: 30-36, 28-54 Unhemmed

Women's: 0-28 Regular, 2-28 Tall



**MOISTURE WICKING
ANTI-MICROBIAL**

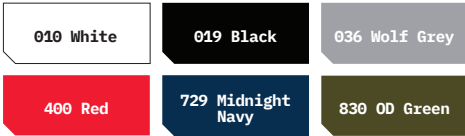
BETTER PREPARED TO

PERSIST

PERFORMANCE TRAINING SHIRT

STAY FOCUSED, STAY COMFORTABLE

Keep cool, comfortable, and dry during even the toughest of training sessions, thanks to its superior fabric and athletic fit.



SHORT SLEEVE
112503 MEN'S PERFORMANCE T-SHIRT



LONG SLEEVE
111504 MEN'S PERFORMANCE T-SHIRT

FEATURES

- 100% Polyester micro pique
- Moisture-wicking, antimicrobial finish
- No-roll stretch rib collar
- Saddle shoulder and flat lock seams for comfort
- Running gusset for maximum movement
- Longer body stays tucked in
- Tagless neck label to prevent irritation
- Fully customizable
- PFAS COMPLIANT

Men's Long Sleeve: S-3XL (019: XS-5XL)
Short Sleeve: Size S-4XL



NEW

MOCK NECK LONG SLEEVE TEE

Built to shield against the elements and maintain comfort in motion, the Mock Neck Tee delivers thermal retention, stretch, and mission-critical comfort.



111509 MEN'S LONG SLEEVE MOCK NECK

FEATURES

- 8.4oz, 83% Polyester / 17% Spandex blend
- Dobby back acts as micro-insulation that traps air and retains heat
- Wicking and anti-odor finish
- Generous stretch with fitted silhouette
- Seamsoft thread improves comfort during long wear
- Embellishable fold-over mock neck for warmth
- Running gusset for maximum mobility
- Internal ID write bar for personalization
- PFAS COMPLIANT

Hombres: XS-5XL Regular y L-5XL Alto



TACTIX COTTON T-SHIRT

BETTER FIBER, BETTER FEEL

Unbeatable comfort and durability, engineered with premium cotton that holds up through every shift.



019 Black

016 Heather Grey

729 Midnight Navy

SHORT SLEEVE

112501 MEN'S TACTIX COTTON T-SHIRT

122501 WOMEN'S TACTIX COTTON T-SHIRT

LONG SLEEVE

111505 MEN'S TACTIX COTTON T-SHIRT

121505 WOMEN'S TACTIX COTTON T-SHIRT



FEATURES

- 100% cotton jersey knit, fade and shrink resistant
- No-roll stretch rib collar
- Longer body stays tucked in
- Tagless neck label to prevent irritation
- PFAS COMPLIANT

Men's: XS-6XL

Women's: XS-XXL

729 Midnight Navy

LONG SLEEVE

111508 MEN'S TACTIX SERIES COTTON T-SHIRT WITH SLEEVE PEN POCKET

121508 WOMEN'S TACTIX COTTON T-SHIRT WITH SLEEVE PEN POCKET

111510 MEN'S TACTIX COTTON T-SHIRT WITH CHEST POCKET

121510 WOMEN'S TACTIX COTTON T-SHIRT WITH CHEST POCKET

SHORT SLEEVE

112511 MEN'S TACTIX COTTON T-SHIRT WITH SLEEVE PEN POCKET

122511 WOMEN'S TACTIX COTTON WITH SLEEVE PEN POCKET

112521 MEN'S TACTIX COTTON T-SHIRT WITH CHEST POCKET

122521 WOMEN'S TACTIX COTTON T-SHIRT WITH CHEST POCKET

Men's: S-8XL

Women's: XS-XXL

ALSO IN WOMEN'S FIT





TACTIX COTTON PT SHORT

BUILT FOR TRAINING

Designed to perfectly complement the Tactix Tee, these shorts are comfortable, fade-resistant, and fit seamlessly into your training routine.

729 Midnight Navy

115008 MEN'S TACTIX PT COTTON TRAINING SHORT

FEATURES

- 100% cotton jersey knit, fade and shrink resistant
- Elastic waist with adjustable drawstring
- Side pockets
- 8" inseam
- PFAS COMPLIANT

Men's: S-3XL



TAA
COMPLIANT

COTTON STATION SHIRT

ALL-DAY COMFORT

Built for comfort, professionalism, and long-lasting durability—making it a must-have for firehouse duty.

010 White

729 Midnight Navy

781 Medium Blue



SHORT SLEEVE

112008 MEN'S COTTON STATION SHIRT

122008 WOMEN'S COTTON STATION SHIRT

LONG SLEEVE

111009 MEN'S COTTON STATION SHIRT

121009 WOMEN'S COTTON STATION SHIRT

FEATURES

- 5.5 oz, 100% Tough Cotton™ fabric
- Satin-lined neck band
- Stitched pintucks
- Durable melamine faux button front placket with hidden YKK® locking zipper
- Hook/loop chest pockets
- Epaulet, mic holder, badge tab kit included
- PFAS COMPLIANT

Men's: S-XXL Short, S-4XL Regular, Tall sizes L-6XL

Women's: XS-3XL Regular



YKK® LOCKING ZIPPER



ALSO IN WOMEN'S FIT



COTTON STATION PANT

RUGGED COTTON, LASTING COLOR

Built to keep you moving comfortably whether you're at the station or out on a call—No fading, no shrinking, and no giving out on you when the pressure's on.

729 Midnight Navy



ALSO IN WOMEN'S FIT

- 114024** MEN'S COTTON STATION PANT
- 124024** WOMEN'S COTTON STATION PANT

FEATURES

- 100% Tough Cotton™ fabric
- 360 Degree comfort stretch waist with a silicone gripper keeps your shirt securely tucked
- Knee to knee running gusset for maximum movement
- Welted back pockets with button closure
- Prym® snap/YKK® zipper
- PFAS COMPLIANT

Men's: Waist 28-54, Length 30-36, 28-54 Unhemmed
Women's: 0-20 Regular, 2-20 Tall, 0-20 Unhemmed

- 114030** MEN'S CARGO COTTON STATION PANT
- 124030** WOMEN'S CARGO COTTON STATION PANT

FEATURES

- Same features as Cotton Station Pant
- 2 additional exterior utility pockets
- PFAS COMPLIANT

CARGO COTTON STATION SHORT

100% Tough Cotton™ fabric with reinforced stitching

- 115006** MEN'S CARGO COTTON STATION SHORT
- 125006** WOMEN'S CARGO COTTON STATION SHORT

FEATURES

- Same features as Cargo Cotton Station Pant
- 11" inseam
- PFAS COMPLIANT

Men's: 28-54
Women's: 0-20



COTTON JOB SHIRT

DAILY, RELIABLE COMFORT

Soft yet durable cotton job shirt with a professional look, fleece, and convenient pockets.

019 Black

729 Midnight Navy

118507 MEN'S COTTON JOB SHIRT
128507 WOMEN'S COTTON JOB SHIRT

FEATURES

- Heavy-duty 84% Cotton/16% Polyester fleece
- YKK® zip up collar
- Easily accessible mic loops at shoulders
- Dropped front yoke with chest and pen pockets
- Underarm gussets for maximum movement
- Durable V2 ripstop fabric elbow patches minimize abrasion points
- Fully customizable
- PFAS COMPLIANT

Men's: 019: S-5XL Regular, L-4XL Tall
Men's: 729: XS-4XL Regular, L-5XL Tall
Women's: XS-XXL

TAA
COMPLIANT



ALSO IN WOMEN'S FIT



COTTON POLO

SOFT FEEL, CLASSIC DESIGN

ALSO IN WOMEN'S FIT

A professional-grade polo with soft cotton fabric, a stay-flat collar, and utility pen pocket.



SHORT SLEEVE

- 112508** MEN'S COTTON POLO
- 122508** WOMEN'S COTTON POLO

LONG SLEEVE

- 111502** MEN'S COTTON POLO (729 ONLY)
- 121502** WOMEN'S COTTON POLO (729 ONLY)

FEATURES

- Fade and shrink resistant cotton
- Running side gussets for maximum movement
- Longer body stays tucked in
- Integrated collar stays to prevent curling
- Mic loops at shoulders and bottom of center front placket
- Reinforced pen pocket
- Durable melamine buttons
- PFAS COMPLIANT

Men's: S-4XL, Women's: XS-XXL



HI-VIS POLO

RELIABLE VISIBILITY

High-visibility polo combining reflective safety features and breathable fabric for all-day wear.

204 Hi-Vis
Yellow

730 Royal
Blue



3M

TAA
COMPLIANT

112516 HI-VIS POLO

FEATURES

- Lightweight, breathable side gussets
- Fade, shrink, snag and wrinkle resistant
- 3M[®] reflective striping for visibility
- Integrated collar stays to prevent curling
- Dropped front yoke with pen pocket
- Running gusset for maximum movement
- Longer body stays tucked in
- PFAS COMPLIANT

XS-4XL Regular, L-4XL Tall



111054 HI-VIS PRO DUTY PULLOVER
(AVAILABLE IN APRIL 2026)

NEW

HI-VIS PRO DUTY PULLOVER

Designed to enhance your operational profile during low-light scenarios, it keeps heat where it's needed, releases excess body warmth, and ensures you stay focused, unencumbered, and better prepared to respond.

019 Black

FEATURES

- 85% Polyester/15% Spandex sleeves/collar & 85% Nylon 15% Spandex body
- Same specs as Pro Duty™ pullover, (see page 42)
- ANSI/ISEA-compliant 3M[®] reflective taping for 360° low-light visibility.

Regular: XS-5XL

HI-VIS PARKA

REFLECTIVE & PROTECTIVE

ALSO IN WOMEN'S FIT

High-visibility parka with waterproof protection and reflective accents, designed for safety and comfort in low-light, hazardous environments.



WATERPROOF



FINISH

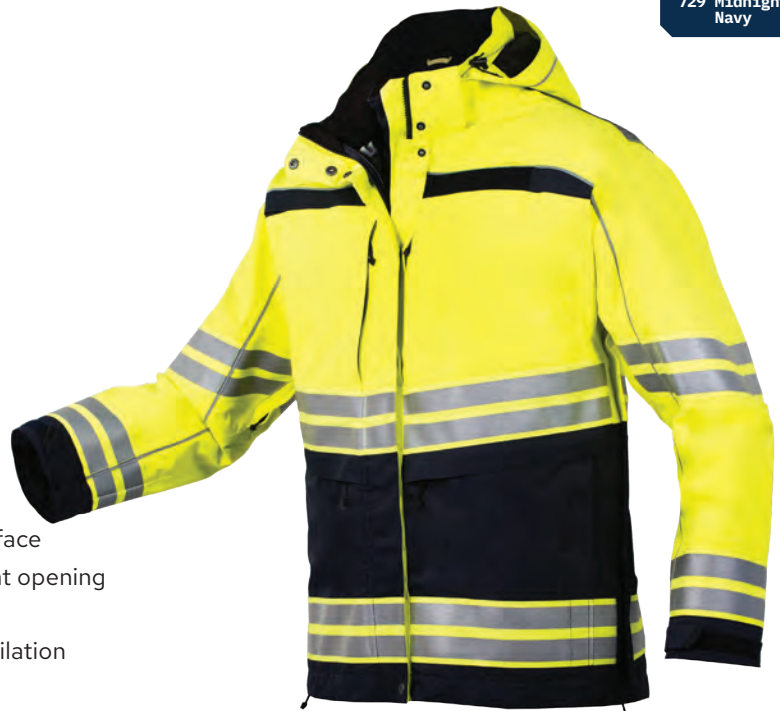


COMPLIANT

- 118505 MEN'S TACTIX HI-VIS SYSTEM PARKA
- 128505 WOMEN'S TACTIX HI-VIS SYSTEM PARKA

FEATURES

- 3-Layer fabric: outer shell, waterproof/ breathable membrane, tricot back
- • ANSI/ISEA 107-2020 Class 2 Standard
- • Fully seam sealed
- • Removable Tactix Softshell Parka included
- • Rain Gutter Design™ on hood keeps water off the face
- • 3-way custom adjustable hood with memory wire at opening
- • Easily accessible mic loops at front yoke
- • Zippered underarm gusset for movement and ventilation
- • Dual access zip secure hand pockets
- • Adjustable hook/loop cuff closure
- • YKK® Zippers, Prym® snaps, Duraflex® hardware
- • PFAS COMPLIANT



729 Midnight Navy

- 118522 MEN'S TACTIX HI-VIS PARKA OUTER SHELL
- 128522 WOMEN'S TACTIX HI-VIS PARKA OUTER SHELL

FEATURES

- Same features as Tactix Hi-Vis System Parka minus Removable Softshell Parka
- PFAS COMPLIANT

Men's: S-5XL, L-5XL Tall
Women's: XS-XXL



BETTER FIT, & COMFORT

QUALITY, CONSISTENCY, AND THE PROFESSIONALISM YOU DESERVE.



DESIGNERS REFINING EVERY DETAIL FOR THE PERFECT FIT.



OUR CUSTOM SHOP SEWING A PATCH WITH PRECISION AND CARE.



NEW

MATERNITY PERFORMANCE POLO

DESIGNED TO SUPPORT YOU.

Built to support expecting officers with the same professionalism, durability, and mobility as the standard Performance Polo, the Maternity Performance Polo incorporates adaptive side-seam ruching for a comfortable, flexible fit throughout pregnancy.

019 Black

729 Midnight Navy



MOISTURE WICKING



4-WAY STRETCH



COMPLIANT



122025M WOMEN'S MATERNITY POLO

FEATURES

- Maternity side-seam ruching ensures comfort and maintains a streamlined silhouette
- Same features as Performance Polo (see page 23)
- PFAS COMPLIANT

Women's: XS-3XL Regular

V2 TACTICAL MATERNITY PANT

UNCOMPROMISING COMFORT

Our V2 Tactical Pant re-engineered with a 4-way stretch knit panel that keeps expecting mothers comfortable and professional.



FABRIC



2-WAY STRETCH



DOUBLE-DYED



FINISH



COMPLIANT

019 Black

729 Midnight Navy

830 OD Green

181 Coyote Brown

610 Ranger Green

812 Spruce Green

055 Khaki

124011M WOMEN'S V2 TACTICAL MATERNITY

FEATURES

- 2 x 2mm micro ripstop with 2-way mechanical stretch
- Double dyed fabric locks in color
- DWR water repellent finish
- 4-Way stretch knit panel with elastic waist
- 2 Exterior utility pockets with interior nylon divider pockets
- Triple needle stitched on all main seams
- PFAS COMPLIANT

Women's: 2-28 Regular and Tall Unhemmed, 2-28



NEW

MONSOON PARKA

LIGHT FEEL. HEAVY DUTY.

Built to equip you for wet, shifting environments, the lightweight Monsoon Parka delivers waterproof protection, functional access, without adding bulk or compromising movement. Designed with intentional material mapping and professional-grade features, it supports operational focus and keeps you better prepared to respond.

118536 MONSOON PARKA



WATERPROOF



FINISH



COMPLIANT

019 Black

729 Midnight Navy

FEATURES

- 2.5-layer four way stretch polyester twill with 10K/10K waterproof breathability
- Fully seam-sealed
- Waterproof center-front YKK® zipper with internal storm flap
- Triple Adjustment removable hood with rain gutter and moldable brim
- Seamless underarm gusset and articulated elbows
- Full-length zippered underarm gusset for movement and ventilation
- Dual chest pockets, dual hand pockets, dual internal chest pocket
- Detachable pull-out ID panels (chest and back)
- Adjustable front hem cinch and cuff closures
- Mic tabs at shoulder seams
- Drop-tail parka length hem
- Prym® snaps and Duraflex® hardware, YKK zippers
- Internal locker loop and ID write bar
- PFAS COMPLIANT



Men's: XS-5XL Regular

PU LAMINATION W/ PROTECTIVE HALF-LAYER PRINT



MAINTAINS COMFORT AND PREVENTS MEMBRANE ABRASION

3-WAY ADJUSTABLE HOOD THAT IS REMOVABLE



FACE, CROWN, AND REAR ADJUSTMENTS

SIDE ZIP / PIT ZIP SYSTEM



CONTROLS HEAT BUILDUP AND ENHANCES BELTLINE ACCESS

ADJUSTABLE CUFF CLOSURE



PREVENTS SNAGGING AND IMPROVES GLOVE INTERFACE

COMING SOON

DUAL VERTICAL HAND POCKETS



WARMS HANDS AND SECURES
ITEMS DURING MOVEMENT



SURGE

NEW

STORM SURGE™ JACKET

SHOW UP. STAND OUT.

Built to equip plainclothes officers and federal agents with fast, visible identification during dynamic operations, the Storm Surge Jacket delivers lightweight coverage as a rapid access outer layer supporting clarity, authority, and confident response when conditions change without warning.



WATER RESISTANT



FINISH



COMPLIANT

019 Black

729 Midnight Navy

118563 STORM SURGE JACKET

FEATURES

- Lightweight mechanical stretch polyester shell
- Water-resistant DWR finish
- 3-piece adjustable hood which is removable
- Zippered hand pockets
- Hook-and-loop chest document pocket
- Side zips with snap for quick access
- Mic tabs at shoulder seams
- Adjustable hook/loop cuff closure
- Bar-tacked stress points
- YKK® zippers, Prym® snaps, and Duraflex® hardware
- PFAS COMPLIANT



Men's: XS-5XL Regular, L-5XL Tall

HOOK-AND-LOOP DOCUMENT POCKET (CHEST)



ENABLES QUICK ID RETRIEVAL IN HIGH-STRESS SCENARIOS

SIDE ZIPPERS W/ SNAP



IMPROVES ACCESS TO DUTY BELT OR TOOLS

ZIPPERED HAND POCKETS



RETAINS SMALL ITEMS DURING RAPID MOVEMENT

HOOK-AND-LOOP CUFF CLOSURES



MAINTAINS CLEAN PROFILE AND GLOVE COMPATIBILITY

PRO DUTY™ PULLOVER

BETTER LAYERING, BETTER CONTROL

Combining lightweight breathability with targeted warmth, we made the perfect mid-layer for patrol shifts in varying temperatures demanding duties and active use



FINISH



COMPLIANT

019 Black

036 Wolf Grey

065 Silver Tan

729 Midnight Navy

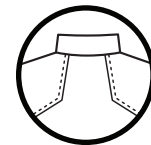
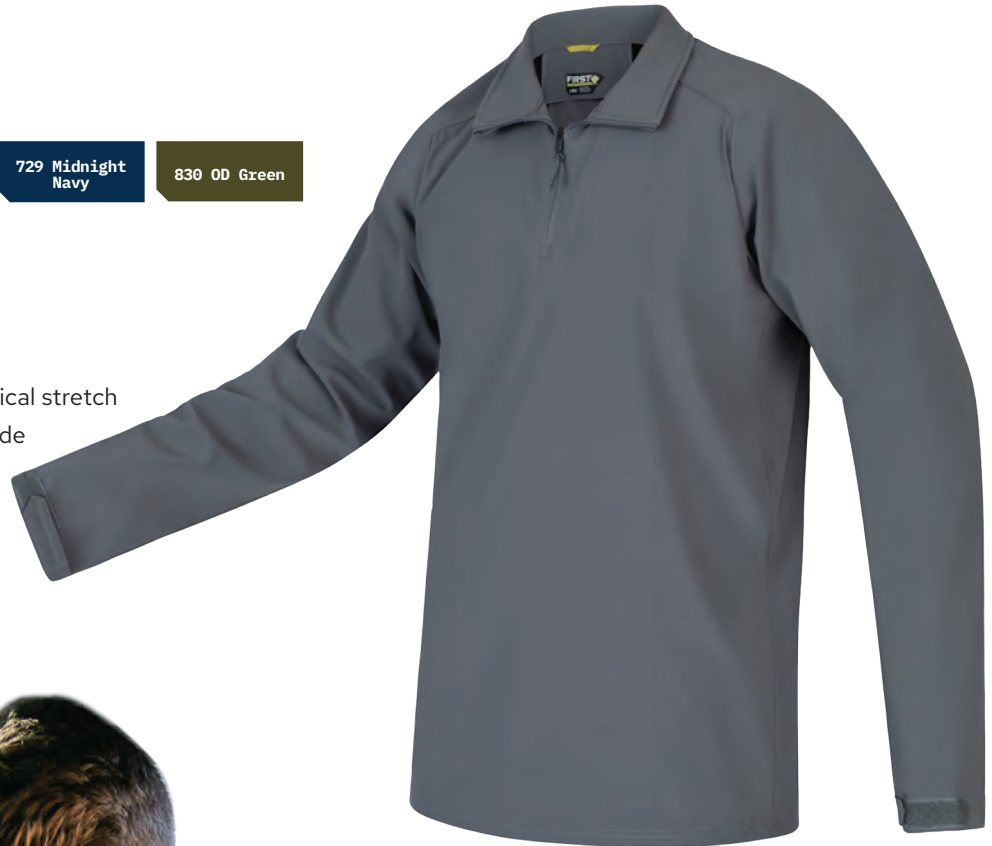
830 OD Green

111018 PRO DUTY PULLOVER

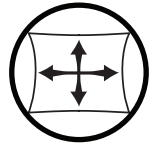
FEATURES

- 85% Nylon/15% Spandex, 4-way mechanical stretch
- Insulated soft brushed stretch fleece inside arms, shoulders and collar
- DWR finish, wind resistant
- Split back yoke for full range of motion
- Body wicking and anti-microbial
- YKK® zip up collar
- Adjustable hook/loop cuff closures
- Duraflex® hardware
- PFAS COMPLIANT

Men's: XS-4XL Regular



SPLIT BACK YOKE
FOR FULL RANGE
OF MOTION



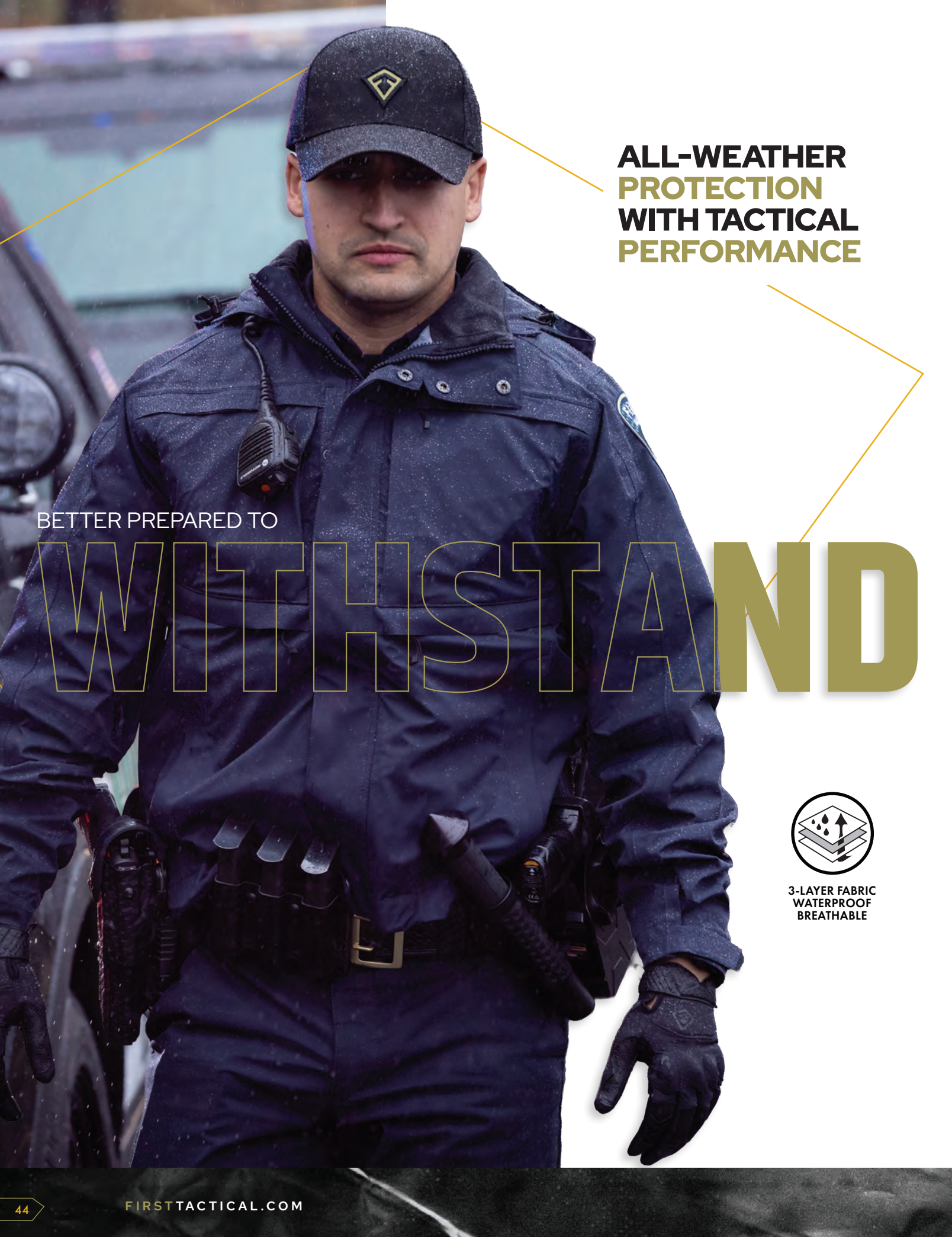
4-WAY STRETCH
FOR BETTER
MOVEMENT





BETTER PREPARED TO

FLEX



**ALL-WEATHER
PROTECTION
WITH TACTICAL
PERFORMANCE**

BETTER PREPARED TO

WITHSTAND



**3-LAYER FABRIC
WATERPROOF
BREATHABLE**

3-IN-1 TACTIX SYSTEM

ALL-WEATHER READINESS

ALSO IN WOMEN'S FIT

A 3-in-1 outerwear system offering customizable layers for warmth, weather resistance, and tactical performance in any environment.



WATERPROOF



MOISTURE WICKING



FINISH



COMPLIANT

019 Black

729 Midnight Navy

830 OD Green

118502 MEN'S TACTIX 3-IN-1 SYSTEM JACKET
128502 WOMEN'S TACTIX 3-IN-1 SYSTEM JACKET

118520 MEN'S TACTIX JACKET SHELL
128520 WOMEN'S TACTIX JACKET SHELL

118500 MEN'S TACTIX 3-IN-1 SYSTEM PARKA
128500 WOMEN'S TACTIX 3-IN-1 SYSTEM PARKA

118519 MEN'S TACTIX PARKA SHELL
128519 WOMEN'S TACTIX PARKA SHELL

FEATURES

- 3-Layer fabric: outer shell, waterproof/breathable membrane, integrated zip in softshell jacket
- Fully seam sealed shell
- Removable Tactix Softshell Parka included in 3-in-1 system styles
- Rain Gutter Design™ on hood keeps water off the face
- 3-way custom adjustable hood with memory wire at opening
- Easily accessible mic loops at front yoke
- Zippered underarm gusset for movement and ventilation
- Dual access zip secure hand pockets
- Removable ID panels inside chest and back shell pocket
- Adjustable hook/loop cuff closure
- PFAS COMPLIANT

Men's: XS-5XL Regular, L-5XL Tall
Women's: XS-XXL



OUTER SHELL



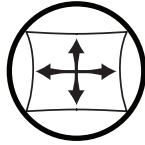
SOFTSHELL JACKET

119001 TACTIX SYSTEM FRONT ID PANELS

119000 TACTIX SYSTEM BACK ID PANELS

019 Black

STRETCH



4-WAY STRETCH
FOR BETTER
MOVEMENT



SOFTSHELL JACKET & PARKA

IMPRESSIVE WARMTH & UTILITY

Tactix softshell parka offering excellent insulation, weather resistance, and full range of motion in any tactical setting.

ALSO IN WOMEN'S FIT



WATER
RESISTANT



FINISH



COMPLIANT

019 Black

036 Wolf Grey

729 Midnight
Navy

830 OD Green

118501 MEN'S TACTIX SOFTSHELL PARKA
128501 WOMEN'S TACTIX SOFTSHELL PARKA

FEATURES

- 85% Nylon / 15% Spandex body
- 4-Way mechanical stretch
- Running side gussets for maximum movement
- Two zip-secure chest and hand pockets with two internal chest pockets
- Side zipper for firearm access
- Exterior pen pocket
- Adjustable hook/loop cuff closures
- Adjustable hem and 2-way YKK® zip closure
- Prym® snaps and DuraFlex® hardware
- PFAS COMPLIANT

Men's: XS-5XL (XS-8XL in 019 only) Regular, L-5XL Tall
Women's: XS-XXL



019 Black

729 Midnight
Navy

830 OD Green

118503 MEN'S TACTIX SOFTSHELL JACKET
128503 WOMEN'S TACTIX SOFTSHELL JACKET

FEATURES

- Same features as Tactix SoftShell Parka
- Jacket Length: 2" shorter than Parka
- PFAS COMPLIANT

Men's: XS-5XL Regular, L-5XL Tall
Women's: XS-XXL



019 Black

036 Wolf Grey

729 Midnight
Navy

830 OD Green

118004 MEN'S TACTIX SOFTSHELL VEST

Men's: XS-4XL
Vest does not have side zipper for firearm access

TACTIX SOFTSHELL PULLOVER

WARMTH WITHOUT BULK

Professional warmth and wind resistance in a streamlined half-zip design, a great outer layer without added bulk.



WATER
RESISTANT



FINISH



COMPLIANT

019 Black

729 Midnight
Navy

830 OD Green

118508 MEN'S TACTIX SOFTSHELL PULLOVER
128508 WOMEN'S TACTIX SOFTSHELL PULLOVER

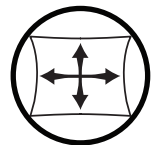
FEATURES

- 85% Nylon/15% Spandex with 4-way stretch
- YKK® zip up collar
- Water and wind resistant
- Easily accessible mic loops at shoulders
- Dropped front yoke with chest and pen pockets
- Double layer reinforced elbows
- Drop-tail back hem
- Adjustable hem cinch and cuff closures
- PFAS COMPLIANT

Men's: S-4XL Regular, L-4XL Tall
Women's: XS-XXL



ALSO IN WOMEN'S FIT



4-WAY STRETCH
FOR BETTER
MOVEMENT

PACK-IT JACKET & TACTIX RAIN PANT

COMPACT, INSTANT COVERAGE

Quick, on-demand weather protection, designed to be easily stowed and deployed for when conditions turn unpredictable.



WATER
RESISTANT



FINISH

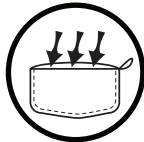


COMPLIANT

019 Black

729 Midnight
Navy

830 OD Green



JACKET PACKS
INTO ITS
OWN POCKET



118509 PACK-IT JACKET

FEATURES

- 100% Nylon ripstop with water repellent finish
- Lightweight and packable
- YKK® full zip
- Easily accessible mic loops at front yoke
- Zip secure hand pockets
- Hook-and-loop chest document pocket. Only one pocket at exterior chest.
- Adjustable hook/loop cuff closures
- Duraflex® hardware
- Fully customizable
- PFAS COMPLIANT

Sizes: XS-4XL Regular



114037 TACTIX RAIN PANT

FEATURES

- 100% 3-Layer Nylon, fully seam sealed
- Lightweight and packable
- Elastic waist with adjustable drawcord YKK® zip secure side opening for easy tool access
- Bartacked in critical locations for longevity
- Articulated knees and running gusset for maximum movement
- YKK® zip leg opening for easy on/off
- Boot hook/loop to keep pant legs in place
- PFAS COMPLIANT

Men's: XS-4XL Short, Regular, & Tall

FIRST TACTICAL BELTS

COMFORTABLE & SECURE

A collection of tactical belts offering rugged durability, secure buckles, and reliable support for any mission or range day.



143020 COBRA BELT 1.5"



FEATURES

- 100% Nylon
- Adjustable to fit your size
- 2 layers of heavy-duty of Nylon webbing, reinforced with PE board
- Pre-curved to fit the waist, with no break-in period
- Two-button quick release, low-profile articulated buckle
- Premium AustriAlpin solid brass buckle with stainless-steel components
- Hidden key pocket in inside tag
- Safety loop

Sizes: S-4XL

019 Black



143026 RIGGERS BELT 1.75"

FEATURES

- 100% Nylon
- Heavy-duty for daily wear
- Strong load-bearing capacity for your gear
- Secure webbing lock with hook/loop closure
- V-ring provides a secure attachment point

Sizes: S-4XL

019 Black



143001 MEN'S BDU BELT 1.5"

143000 MEN'S BDU BELT 1.75"

143028 WOMEN'S BDU BELT 1.5" (BLACK ONLY)

FEATURES

- 100% Nylon
- Single layer webbing
- HD polymer double bar, airport-friendly buckle

Men's: XS-4XL, Women's: XS-XXL

019 Black

181 Coyote Brown

830 OD Green



143002 RANGE BELT 1.75"

143004 RANGE BELT 1.5"

FEATURES

- 100% Nylon
- Double layer HD webbing
- HD polymer double bar, airport-friendly buckle

Sizes: S-4XL

019 Black

830 OD Green

TACTICAL BELT

BETTER STRENGTH, BETTER SUPPORT

Durable tactical belt with reinforced webbing and a reliable buckle for secure, all-day support.

019 Black

830 OD Green



COMPLIANT

- 143009** MEN'S TACTICAL BELT 1.5"
- 143010** MEN'S TACTICAL BELT 1.75"
- 143032** WOMEN'S TACTICAL BELT 1.5" (BLACK ONLY)

FEATURES

- 100% Nylon
- Fabricated and riveted aluminum/steel buckle
- Strength rated at 9 kN (2023 lbf) direct or 18 kN (4046 lbf) indirect force
- Double layer HD webbing

Men's: S-4XL, Women's: XS-XXL



TACTICAL BELT



COBRA BELT



RIGGERS BELT



RANGE BELT

FIRST TACTICAL HATS

EASILY CUSTOMIZABLE

Made with the same fabrics as our apparel items, our headwear is color-matched for a seamless, professional look.



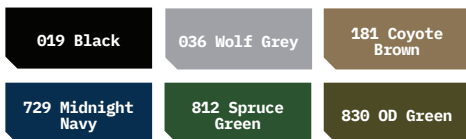
142062 FT FLEX HAT



FEATURES

- V2 mechanical stretch micro ripstop
- DWR water repellent finish
- Stretch sweatband
- PFAS COMPLIANT

Sizes: S/M, L/XL, XXL



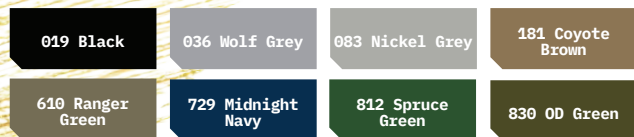
142069 V2 UNIFORM HAT



FEATURES

- V2 mechanical stretch micro ripstop
- DWR water repellent finish
- Traditional buckrim lined crown
- Hook & Loop back adjustment
- Sewn eyelets
- PFAS COMPLIANT

Sizes: L/XL



142075 A2 ADJUSTABLE HAT



FEATURES

- A2 mechanical stretch canvas
- DWR water repellent finish
- Perfect for customized embellishing
- Traditional buckrim lined crown
- Hook & Loop back adjustment
- Sewn eyelets
- PFAS COMPLIANT

Sizes: L/XL



142074 FLEECE SERVICE BEANIE



FEATURES

- 100% Polyester Polar Fleece
- Double-layer lower portion for wind protection
- Warm yet light
- Fits under duty helmets
- PFAS COMPLIANT

Sizes: S/M, L/XL, XXL



CUSTOMIZATION READY: We can provide full customization to your uniforms and hats. Contact our customer service team for more information on embroidery, heat transfers, laser engraving, custom nametapes, patches, and more.

FIRST TACTICAL GLOVES

BETTER GRIP, BETTER CONTROL

Durable gloves offering superior grip, dexterity, and protection for every mission and task.



WATCH CUTOUT



U-SHAPED THUMB GUSSET



TOUCHTAC SENSITIVITY



PISTOL GRIP PALM



GOATSKIN PALM

019 Black

060 Coyote



150012

MEN'S SLASH & FLASH GLOVES

150021

WOMEN'S SLASH & FLASH GLOVES (BLACK ONLY)

Sizes: Men's S-XXL, Women's S-XXL



150001

MEN'S LIGHTWEIGHT PATROL GLOVE

150002

WOMEN'S LIGHTWEIGHT PATROL GLOVE (BLACK ONLY)

Sizes: Men's S-XXL, Women's S-XXL



150007

MEN'S PRO KNUCKLE GLOVE

Sizes: Men's S-XXL



150009

MEN'S SLASH PATROL GLOVE (BLACK ONLY)

Sizes: Men's S-XXL



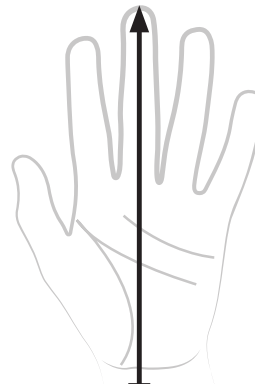
150005

MEN'S MEDIUM DUTY PADDED GLOVE (BLACK ONLY)

Sizes: Men's S-XXL

DETERMINE YOUR GLOVE SIZE:

Place your right hand, palm up behind the page and measure along the middle finger down to the natural fold at your wrist.



EMS/EMT JUMP BAG & POUCHES

DURABLE & EASY TO CLEAN

Durable EMS jump bag and pouches designed with modular storage, quick-access compartments and rugged construction to ensure you're ready for every emergency.

180029 LARGE JUMP BAG

FEATURES

- 1000D Polyester
- 2" deep HD TPU bottom molding
- Easy to clean webbing and bottom
- 3/4 Zip design keeps the lid clear of the ground
- Hook/loop interior
- Easily customizable for user's individual needs
- Bag stays upright with its rigid internal structure
- Gurney hooks to aid when transporting patients

Dimensions: 22" L x 12" W x 12" D / 2844 cubic inches / Approx capacity: 46.6 Liters

204 Hi-Vis
Yellow

400 Red

180047 JUMP PACK HARNESS

FEATURES

- Converts Jump Bag from shoulder bag to backpack
- Hooks and sternum strap optimize Jump Bag weight distribution
- Moisture wicking straps with EVA foam padding

015 Asphalt





(EMS SUPPLIES NOT INCLUDED)

180040 OXYGEN KIT

800 Green

FEATURES

- 600D Polyester
- Buckled C-clamps with hook/loop closures allow kit placement inside or outside of the Jump Bag
- Padded bottle cover
- Top/side handle

Approx. capacity: 254 cubic inches / 4.2 liters
16.0" H x 4.5" Dia / 40.6cm H x 10.3cm Dia



(EMS SUPPLIES NOT INCLUDED)

180045 TRAUMA KIT

300 Orange

FEATURES

- 600D Polyester
- Internal organization keeps supplies in one place
- Oversized zipper pulls
- Top handle

Size: 9" x 11.5" x 3"



(EMS SUPPLIES NOT INCLUDED)

180042 I.V. KIT

400 Red

FEATURES

- 600D Polyester
- Stadium pockets offer quick, easy visibility
- Oversized zipper pulls
- Top handle

Size: 6" x 11.5" x 3"



(EMS SUPPLIES NOT INCLUDED)

180043 MEDICATION KIT

275 Yellow

FEATURES

- 600D Polyester
- Clear window with snap-lock ensures secure, visible meds
- Foam interior lets you customize medication layout
- Oversized zipper pulls
- Top handle

Size: 6" x 11.5" x 3"



(EMS SUPPLIES NOT INCLUDED)

180041 AIRWAY KIT

700 Blue

FEATURES

- 600D Polyester
- Individual mesh pouches for 5 Miller & 5 Mac Blades
- Oversized zipper pulls
- Top handle

Size: 9.5"x11.5"x3"



180046 DOCTAC NAME TAPES - 3 PACK

015 Asphalt

FEATURES

- 600D Polyester
- Easily customize your kit and pouches with these name tapes
- Lanyard hole
- TPU material

Size: 6"x1" hook/loop name strip

SPECIALIST ROLLING DUFFLE

HEAVY DUTY, EFFICIENT STORAGE

Built to withstand long missions and rough handling, the Specialist Rolling Duffel is designed for easy transport, optimal gear access, and efficient storage when not in use.

019 Black

180022 SPECIALIST ROLLING DUFFEL 132L

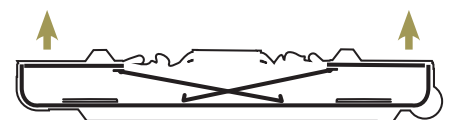
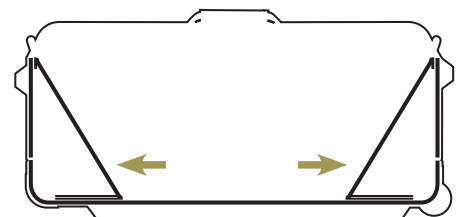
FEATURES

- 1050D/100% Nylon construction, under 10 lbs - ideal for travel
- Folding frame lock system to collapse and store flat
- Thick, sturdy, telescoping handle for heavy tactical gear
- 2 large external zippered pockets
- Micro mesh ID window
- Oversized, heavy-duty wheels

Main compartment: 30" x 16" x 16" D / Approx. capacity: 8000 cubic inch / 132 liter



STAND TALL:
WHEN LOCKED, INTERNAL FRAME
STRUCTURE WILL NOT COLLAPSE



LAY FLAT:
FOLDS FLAT FOR EASY STORAGE



EXECUTIVE BRIEFCASE

OFFICE-TO-FIELD-BAG

A sleek, durable briefcase with a padded laptop compartment, organized interior, and tactical durability for the modern professional on the go.

019 Black

180002 EXECUTIVE BRIEFCASE 26L

FEATURES

- 1050D 100% Nylon
- Padded closed foam protective laptop compartment
- Hidden back CCW pocket
- Double zip main opening

Main compartment: 16.5" W x 10.5" H x 5.25" D / 41.9cm W x 26.7cm H x 13.3cm D
Computer compartment: 16.5" W x 10.5" H x 1.25" D / 41.9cm W x 26.7cm H x 3.2cm D
Front pockets: (x2) 8.25" W x 9" H x 1.75" D / 21.0cm W x 22.9cm H x 4.4cm D
Side pockets: (x2) 5.25" W x 9.5" H x 2" D / 13.3cm W x 24.1cm H x 5.1cm D
Approx. capacity: 1586 cubic inches / 26 liters



INTERIOR VIEW: CCW POCKET



ZIP OUT GEAR POCKETS



SUMMIT SIDE SATCHEL

EVERY DAY COMPACT CARRY

Designed for maximum efficiency, offering essential carry solutions with a rugged build for everyday use.

019 Black

036 Wolf Grey

060 Coyote

830 OD Green

180012 SUMMIT SIDE SATCHEL 8L

FEATURES

- 1050D 100% Nylon
- Padded tablet compartment
- Hidden back CCW pocket
- Non-slip shoulder

Main compartment: 12.5" L x 10" H x 4.5" D / 31.75cm L x 25.4cm H x 11.4cm D
Approx. capacity: 495 cubic inches / 8 liters



CROSSHATCH SLING PACK

BETTER MOBILITY, BETTER VERSATILITY

Sling pack with a sleek design, multiple compartments, and quick-access features for everyday carry.

019 Black

036 Wolf Grey

060 Coyote

830 OD Green

180011 CROSSHATCH SLING PACK 19L

FEATURES

- 1050D 100% Nylon
- Cross-body platform
- Re-positionable or removable compression straps
- Main compartment opens to a mesh pocket
- Hook/loop interior organization
- Pockets: 4 external, 3 internal
- Back CCW pocket

Main compartment: 9" L x 17.5" W x 6" D / 23cm L x 46cm H x 16cm D
Approx. capacity: 1165 cubic inches / 19.1 liters



COMPRESSION STRAPS



MAIN COMPARTMENT WITH MESH POCKET



CROSS-BODY PLATFORM

RECOIL RANGE BAG

DURABLE EXCELLENCE

Spacious range bag with padded compartments, reinforced construction, and easy-access design for all your gear.

019 Black

036 Wolf Grey

060 Coyote

180000 RECOIL RANGE BAG 40L

FEATURES

- Locking main compartment with hook/loop flap which opens a zipper loop
- Sliders overlap for easy locking
- Cleaning pocket with tool storage compartment with oil-resistant lining for firearms cleaning tools
- Pull-out padded carrier with dividers for easy organization: 2 pistol pockets and 10 pistol mag pockets

Main compartment: 18" L x 11" H x 9" D / 45.7cm L x 27.9cm H x 22.9cm D

Front pockets: (x2): 8.5" L x 9" H x 2" D / 21.6cm L x 22.9cm H x 5.0cm D

Side pockets: (x2): 7.5" L x 8.5" H x 3" D / 19.1cm L x 21.6cm H x 7.6cm D

Carrier compartment: 16.25" W x 7" H x 5.5" D / 41.3cm W x 17.8cm H x 14.0cm D

Approx. capacity: 2470 cubic inches / 40.5 liters

Weight: 4.4 lbs / 2.0 kg



SIDE



BACK



CLEANING POCKET
WITH TOOL STORAGE

CALIBER RANGE BAG

STREAMLINED FOR EVERY SHIFT

Compact patrol bag with optimized storage, durable construction, and easy access for essential gear.

019 Black

180081 CALIBER RANGE BAG 18L

FEATURES

- 600D 100% Polyester
- Interior dividers
- Pull-out pistol/mag sleeve
- Bottom board for stability
- Reinforced foam construction
- Front gusseted pockets
- Cleaning kit pocket
- Add-a-Bag strap



Approx. capacity: 1119 cubic inches / 18.3 liters

EDT PATROL BAG

BETTER ORGANIZATION

Perfect for patrol officers, it offers versatile carrying and streamlined organization

019 Black

180080 EDT PATROL BAG 26L

FEATURES

- 600D 100% Polyester
- Interior hook/loop organization platform
- Water bottle pockets
- Front slash pockets
- Interior mesh pockets
- Bottom board for stability
- Adjustable shoulder strap
- Reinforced carry handles



Approx. capacity: 1606 cubic inches / 26.3 liters

LARGE PISTOL SLEEVE

SECURE FIREARM PROTECTION

Durable pistol sleeve with padded protection and locking zippers for safe, reliable transport.

019 Black

830 OD Green

060 Coyote

036 Wolf Grey

180010 LARGE PISTOL SLEEVE 11" X 8 1/2" X 11 1/2"

FEATURES

- 500D 100% Nylon
- 10mm closed cell foam
- Includes padded slash pocket and hook/loop platform
- 5 Integrated elastic loop slots for pistol mags
- YKK® zippers and Duraflex™ hardware

Approx. Capacity 135 cubic inches / 2.2 liters



GUARDIAN PATROL BAG

AMPLE SPACE FOR GEAR

Durable exterior with reinforced dividers and hard bottom for a highly functional interior



180001 GUARDIAN PATROL BAG 41L

FEATURES

- 600D 100% Polyester
- Pockets: 6 external, 2 internal dividers
- YKK® zippers and Duraflex™ hardware
- Dim. 18 1/2" x 11" x 9"

Approx. capacity: 2530 cubic inches / 41.5 liters

019 Black

FIRST TACTICAL TOOLS

EVERYDAY TOOLS

Rugged tools designed for reliability, precision, and versatility in the field.

140000 SCORPION KNIFE TANTO

019 Black

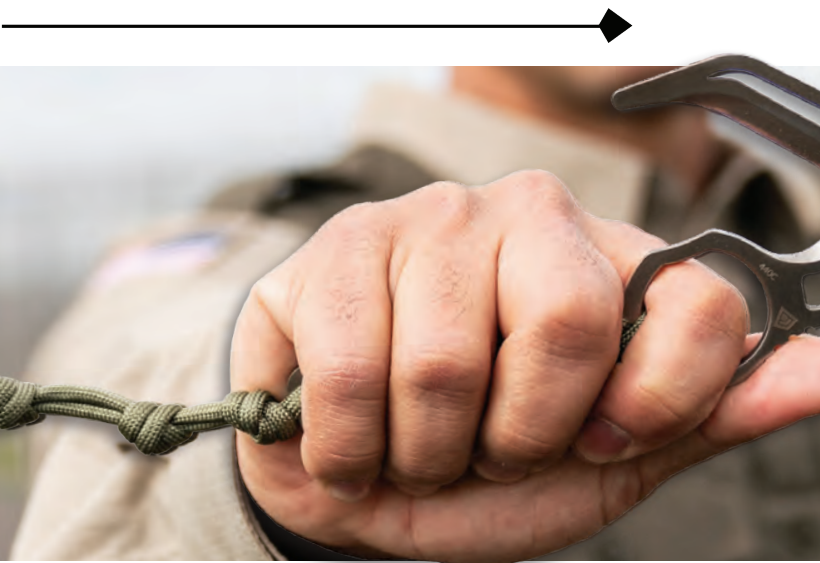
FEATURES

- Easy to find index finger locator for quick knife deployment
- Lightening cuts throughout, keeping it lightweight

440A stainless steel
Overall length: 4.92in / 125mm
Weight: 2.6 oz



KNIFE FITS INTO SIDE POCKET OF THE 8" OPERATOR BOOT STYLES



195203
195203.20

SPEAR MULTI-TOOL (SINGLE)
SPEAR MULTI-TOOL (BOX OF 20)



140025 SCORPION RESCUE TOOL

FEATURES

- Thin profile
- Lightening cut blade and handle
- Secure index finger and thumb grip
- 550 Cord handle
- Triple knotted extended cord

Patent Pending Design 440A stainless steel
Length: 5.52" / 13.34cm
Width: 2.63" / 6.68cm
Thickness: 0.13" / 3.2mm



180100 SCORPION RESCUE TOOL CASE

FEATURES

- Bottle opener
- Aimpoint optics
- Phillips and flat head drivers
- Wrenches
- Oxygen key
- Key ring slot
- Pry

440A steel | Length: 2.00in / 0.79cm
Width: 1.875in / 0.74cm
10.0mm/0.394" wrench
0.50"/12.7mm wrench
0.375"/9.5mm wrench
0.25"/6.4mm wrench

610 Ranger Green

019 Black

610 Ranger Green

729 Midnight Navy

SPECIALIST BACKPACKS

STORAGE WITHOUT COMPROMISE

Backpacks with large compartments and easy-access design for efficient gear handling.



180006

0.5-DAY SPECIALIST BACKPACK

11" L x 18" H x 6" D/
27.9cm L x 45.7cm H x 15.2cm D
Approx. capacity: 1430 cubic inches/23 liters



180005

1-DAY SPECIALIST BACKPACK

12" L x 19" H x 8" D/
30.5cm L x 48.3cm H x 20.3cm D
Approx. capacity: 1922 cubic inches/31.5 liters



180004

3-DAY SPECIALIST BACKPACK

13" L x 22" H x 9" D/
33.0cm L x 55.9cm H x 22.9cm D
Approx. capacity: 3325 cubic inches/54.5 liters



FEATURES

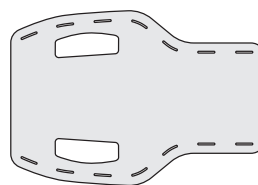
- 1050D water resistant 100% Nylon
- Structured haul handle
- Sunglass pocket
- Name tape hook/loop platform
- Organization pockets
- Bottom hook/loop pocket
- Sternum strap
- Traditional web platform
- Multi-purpose safety tool: removable backboard provides pack stability and can be used as a splint or shovel

019 Black

036 Wolf Grey

060 Coyote

839 OD Green





CONFIGURE

TACTIX BACKPACKS

BUILT FOR TACTICAL EFFICIENCY

These sturdy packs feature innovative Lynx™ Laser Cut Platform, compatible with MOLEE/PALS



180036

0.5-DAY TACTIX BACKPACK

11" L x 18" H x 6" D
27.9cm L x 45.7cm H x 15.2cm D
1739 cubic inches/28.5 liters

180021

1-DAY TACTIX BACKPACK

12" L x 19" H x 8" D
30.5cm L x 48.3cm H x 20.3cm D
2151 cubic inches/35.25 liters

180035

3-DAY TACTIX BACKPACK

13" L x 22" H x 9" D
33.0cm L x 55.9cm H x 22.9cm D
3936 cubic inches/64.5 liters

FEATURES

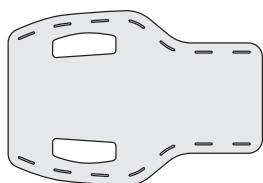
- 500D/1000D double layer, water resistant 100% Nylon
- Lynx™ Laser Cut Platform
- Dual density foam comfort
- Hook and Hang Thru™ System unzips top and bottom, for gear, like First Tactical Rifle Sleeves, to slide through and securely hook & hang in place
- Side haul handle and adjustable yoke handle
- CCW pocket and front quick-access pockets
- Organization pocket and bottom zip pocket
- Hammock style fleece lined sunglass pocket
- Re-positionable compression straps
- Sliding sternum strap
- Multi-purpose safety tool: removable backboard provides pack stability and can be used as a splint or shovel



180048 TACTIX WAIST BELT

FEATURES

- Patented Lynx™ Laser Cut Platform
- Closed cell foam construction
- Durable and comfortable



019 Black

060 Coyote

830 OD Green

TACTIX UTILITY POUCHES

DESIGNED FOR QUICK ACCESS

Durable utility pouches with secure compartments for easy storage and quick access to essentials.

019 Black

060 Coyote

830 OD Green



180014

6X10 UTILITY POUCH

6" L x 10" H x 3" D
Approx. capacity: 180 cubic in./2.9 liters



180013

9X6 UTILITY POUCH

9" L x 6" H x 3" D
Approx. capacity: 162 cubic in./2.7 liters



180015

6X6 UTILITY POUCH

6" L x 6" H x 3" D
Approx. capacity: 108 cubic in./1.8 liters



180016

3X6 UTILITY POUCH

3" L x 6" H x 3" D
Approx. capacity: 54 cubic in./0.9 liters



180020

(1.0L) BOTTLE POUCH

4.25" L x 8.5" H x 3.75" D
Approx. capacity 100 cubic in./1.6 liters / Holds 1.0L bottle



180019

EYEWEAR POUCH

3" L x 7" H x 2.25" D
Approx. capacity 47 cubic in./0.8 liters



180017

MEDIA POUCH (LG)

3" L x 6.25" H x 1" D
Approx. capacity 18.75 cubic in./0.3 liters



180018

MEDIA POUCH (M)

2.5" L x 5.25" H x 0.75" D
Approx. capacity 9.8 cubic in./0.16 liters



180050 COMPRESSION STRAPS

FEATURES

- Removable and replaceable compression straps
- Compatible with all Tactix and Specialist packs

019 Black

060 Coyote

830 OD Green

RIFLE SLEEVES

SECURE FIREARM TRANSPORT

Durable rifle sleeve with padded protection, secure straps, and convenient carry options.

019 Black

060 Coyote

830 OD Green

180007 RIFLE SLEEVE 36" SINGLE

FEATURES

- 500D 100% Nylon
- 10mm closed cell foam padding
- Integrated rifle barrel mount offers precise fit and steadiness
- Opens 180° to serve as shooting mat
- Silent locking padded and reinforced carrying handles
- Hook and Hang Thru™ System allowing users to place rifle across their back
- Hands free, easy carry alternative
- Spacious pocket unzips top and bottom of each pack to accept Rifle Sleeves (works with Tactix and Specialist backpacks)

38" L x 10.5" H x 1.5" D

Approx. capacity: 600 cubic inches/9.8 liters

Weight: 1.65lbs/0.75kg

180008 RIFLE SLEEVE 45" SINGLE

44" L x 10.5" H x 1.5" D

Approx. capacity: 695 cubic inches/11.4 liters

Weight: 1.8lbs/0.82kg



INTERNAL ORGANIZER POUCHES

EASY VIEWING, BETTER STORAGE

Durable, compact pouches with clear micro mesh face for easy viewing and quick access.

FEATURES

- 600D 100% Polyester
- Eyelet on the bottom for drainage
- Light interior makes gear easy to find
- Quick-pull zippers allow one-handed pouch access in emergencies
- Backed with hook/loop for customizable positioning

015 Asphalt



180030 9'X10" HOOK & LOOP POUCH



180033
3"X10"X2" HOOK & LOOP
POUCH



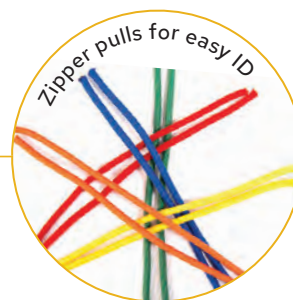
180034
9"X6"X2" HOOK & LOOP
POUCH



180032
6"X6"X2" HOOK & LOOP
POUCH



180031
6"X3"X2" HOOK & LOOP
POUCH



LET US HELP

DETERMINE YOUR SIZE

Using a measuring tape, measure your body (over undergarments), referring to charts below to determine the best size. If you fall between sizes, we recommend ordering the larger size.

NEED HELP DETERMINING YOUR SIZE? CONTACT US!
 CALL: 855.665.3410 OR EMAIL: support@firsttactical.com

WOMEN'S APPAREL/BELT MEASUREMENTS

Alpha US/UK DE/EU	Alpha MX	Numeric US/MX/Bottoms	UK Bottoms	DE/EUR Bottoms	Natural Waist	Hip	Chest	Arm Length
XS	X-Chica/XCH	0	4	30	25½	35	32 - 33	29½ - 29¾
		2	6	32	26½	36		
Small	Chica/CH	4	8	34	27½	37	34 - 35	30¾ - 30¾
		6	10	36	28½	38		
Medium	Mediano/M	8	12	38	29½	39	36 - 37	31 - 31¼
		10	14	40	30½	40		
Large	Grande/G	12	16	42	32	41½	38½ - 40	31¾ - 32
		14	18	44	33½	43		
XL	XG	16	20	46	35¼	45	42 - 44	32½ - 32¾
		18	22	48	38	47		
XXL	XXG	20	24	50	40¼	49	46 - 48	33¾ - 33¾
		22	26	52	42½	51		
3XL	3XG	24	28	54	44¼	53	50 - 52	34 - 34¼
		26	30	56	47	55		
4XL	4XG	28	32	58	49¼	57	54	34¾

HOW TO MEASURE:

NECK: Measure the largest portion of the neck circumference.

CHEST: Measure under arms and around the fullest part of your chest with measuring tape parallel to the floor

MEN'S WAIST: Take measurement around your waistline, where your belt typically sits.

WOMEN'S NATURAL WAIST: Measure around the smallest part of your waist (where it bends).

WOMEN'S HIP: Stand with your feet together & measure around the fullest part of your hip with the measuring tape parallel to the floor.

ARM LENGTH: Slightly bend elbow & measure from center back neck, over top of shoulder & down to wrist

INSEAM: Measure the inseam of pants that fit you well. Place them in a flat position, ensuring both front and back are neatly pressed. Measure from the crotch to the leg hem along the inseam.

MEN'S TALL SIZES: have 2" added to body length and 2" added to sleeve length (1" for short sleeves). Short sizes have 2" removed from body length and 2" removed from sleeve length (1" for short sleeves).

WOMEN'S TALL SIZES: have 2" added to body length and 1½" added to sleeve length (¾" for short sleeves).

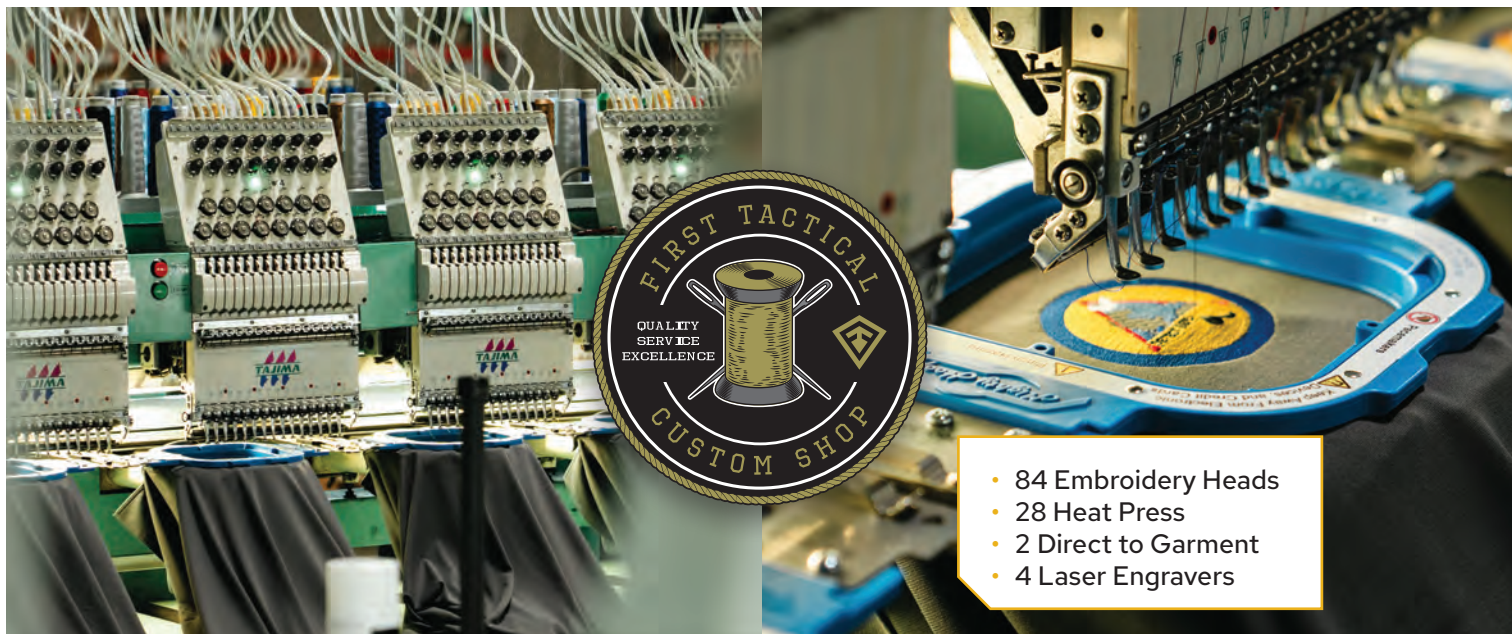
MEN'S APPAREL/BELT MEASUREMENTS

Alpha US/UK DE/EU	Alpha MX	Numeric US/MX/Bottoms	Numeric DE/EUR Bottoms	Waist	Neck	Chest	Arm Length
XS	X-Chica/XCH	24	40	24	13 - 13½	30 - 32	32¼ - 32¾
		26	42	26			
Small	Chica/CH	28	44	28	14 - 14½	34 - 36	33 - 33¾
		30	46	30			
Medium	Mediano/M	32	48	32	15 - 15½	38 - 40	33¾ - 34¼
		34	50	34			
Large	Grande/G	36	52	36	16 - 16½	42 - 44	34¾ - 35
		38	54	38			
XL	XG	40	56	40	17 - 17½	46 - 48	35¼ - 35¾
		42	58	42			
XXL	XXG	44	60	44	18 - 18½	50 - 52	36 - 36¾
		46	62	46			
3XL	3XG	48	64	48	19 - 19½	54 - 56	36¾ - 37¼
		50	66	50			
4XL	4XG	52	68	52	20 - 20½	58 - 60	37½ - 38
		54	70	54			
5XL	5XG	56	72	56	21 - 21½	62 - 64	38¼ - 38¾
		58	74	58			
6XL	6XG	60	76	60	22 - 22½	66 - 68	39 - 39¾
		62	78	62			
7XL	7XG	64	80	64	23 - 23½	70 - 72	39¾ - 40¼
		66	82	66			
8XL	8XG	68	84	68	24 - 24½	74 - 76	40½ - 41
		70	86	70			

NOTE: Measurements are given in inches and correspond to body measurements.

FULL RANGE OF CUSTOM SERVICES

CUSTOM SHOP



- 84 Embroidery Heads
- 28 Heat Press
- 2 Direct to Garment
- 4 Laser Engravers

ALTERATIONS + SCREEN PRINTING + HEAT TRANSFER + LASER ENGRAVING + DIGITIZING + FT FLEX™ + DIRECT TO GARMENT + CUSTOM ARTWORK AND DESIGN AVAILABLE



FOOTWEAR SIZING

Men's US	4	4 ½	5	5 ½	6	6 ½	7	7 ½	8	8 ½	9	9 ½	10	10 ½	11	11 ½	12	13	14	15
Women's US	5 ½	6	6 ½	7	7 ½	8	8 ½	9	9 ½	10	10 ½	11	11 ½	12	12 ½	13	13 ½	14 ½	15 ½	16 ½
UK	3 ½	4	4 ½	5	5 ½	6	6 ½	7	7 ½	8	8 ½	9	9 ½	10	10 ½	11	11 ½	12 ½	13 ½	14 ½
EUR	37	37 ½	38	38 ½	39	39 ½	40	40 ½	41	41 ½	42	42 ½	43	43 ½	44	44 ½	45	46	47	48

Wide Sizes 8 - 15

OPERATOR BOOTS

LIGHTWEIGHT & BREATHABLE

These boots combine exceptional durability with the flexibility and comfort of athletic footwear

165010 7" OPERATOR BOOT
165061 5" OPERATOR MID

019 Black

060 Coyote

FEATURES

- Air mesh upper with Ortholite® foam insole
- Welded construction
- Achilles flex point for freedom of movement
- Durable rubber outsole
- Oil and slip resistant
- TPU heel clip for additional support
- Lace garage keeps laces tucked out of the way

Sizes: Regular 4-12, 13, 14, 15
Wide 8-12, 13, 14, 15



COMPLIANT



WATERPROOF

165015 7" URBAN OPERATOR H₂O SIDE-ZIP BOOT
165912 5" URBAN OPERATOR H₂O SIDE-ZIP MID
165063 5" URBAN H₂O OPERATOR MID

019 Black

WOMEN'S SIZES: SEE
CHART ON PAGE 71

FEATURES

- 100% waterproof membrane construction
- Fiberglass shank for torsional rigidity and arch support
- BK Mesh ensures breathability and moisture-wicking
- Full grain polishable leather toe cap
- Slip and oil resistant

Sizes: Regular 4-15, Half Size 6.5-11.5
Wide 8-15, Half Size 8.5 - 11.5



URBAN OPERATOR SIDE ZIP BOOTS

ATHLETIC SHOE COMFORT

The Torsion Flex™ fiberglass reinforced composite shank is 75% lighter than steel

019 Black



COMPLIANT



- 165014** 7" URBAN OPERATOR SIDE-ZIP BOOT
- 165911** 5" URBAN OPERATOR SIDE-ZIP MID
- 165062** 5" URBAN OPERATOR MID

FEATURES

- Durable YKK® VISLON® zipper and molded zipper covers
- Lightweight Torsion Flex™ fiberglass shank
- Lateral stabilizers outsole creates integrated support
- Lightweight 3D spacer air mesh and strategically placed perforations for ventilation
- Performance insoles for breathability and shock absorption
- Angled lugs easily remove debris
- Full grain polishable leather toe cap
- Achilles flex point for freedom of movement
- Durable rubber outsole
- Oil and slip resistant
- Lace garage keeps laces tucked out of the way

Sizes: Regular 4-12, 13, 14, 15
Wide 8-12, 13, 14, 15

TACTICAL DUTY SOCKS

MOISTURE WICKING

Our socks are super comfortable due to their cushioned soles, for all-day wear

019 Black

- 160008** ADVANCED FIT DUTY 9" SOCKS
- 160013** ADVANCED FIT DUTY 6" SOCKS
- 160014** ADVANCED FIT DUTY 3" LOW CUT SOCKS

ONE SIZE

- 160001** COTTON 6" DUTY 3-PACK SOCKS
- 160002** COTTON 9" DUTY 3-PACK SOCKS

Sizes: S/M, L/XL



COMPLIANT

AERO-TAC

FEATHER LIGHT. FIELD TOUGH.

(WOMEN'S SIZES: SEE CONVERSION CHART ON PAGE 71)

Exceeding Standard Requirements for comfort, durability, stability and traction

Hyperfusion Technology: TPU is fused to the mesh upper, improving durability and reducing delamination risks

REZ-TRAC™ Tread Pattern with strategically placed treads for extreme stability and traction in all directions

FEATURES

- YKK® side zip, zip garage, lace garage, stay flat pull tab

Sizes: Regular 4-15, Half Size 6.5-11.5
Wide 8-15, Half Size 8.5 - 11.5



CERTIFIED



COMPLIANT

019 Black

060 Coyote



NEW COLORS

165925
8" AERO-TAC SZ BOOT



NEW COLORS

165928
5" AERO-TAC SZ MID



NEW COLORS

165930
3" AERO-TAC LOW

019 Black

WATERPROOF

- 165927 8" AERO-TAC WP SZ BOOT
- 165929 5" AERO-TAC WP SZ MID

FEATURES

- Waterproof protected by a HydroGuard® bootie membrane
- YKK® side zip, zip garage, lace garage, stay flat pull tab

Sizes: Regular 4-15, Half Size 6.5-11.5
Wide 8-15, Half Size 8.5 - 11.5



SAFETY TOE

- 165926 8" AERO-TAC SFTY SZ BOOT
- 165931 5" AERO-TAC SFTY SZ MID
- 165932 3" AERO-TAC SAFETY TOE LOW

FEATURES

- Nylon and fiberglass safety toe is stronger and lighter than the standard composite toe boots
- YKK® side zip, zip garage, lace garage, stay flat pull tab

Sizes: Regular 4-15, Half Size 6.5-11.5
Wide 8-15, Half Size 8.5 - 11.5



NEW

AERO-TAC POLISHABLE BOOT

LIGHTWEIGHT & POLISHED

These new side-zip boots are lightweight and polishable, built for comfort and easy care.

- 165934 8" AERO-TAC PT SZ BOOT
- 165933 5" AERO-TAC PT SZ MID

FEATURES

- YKK® side zip, zip garage, lace garage, stay flat pull tab

Sizes: Regular 4-15, Half Size 6.5-11.5
Wide 8-15, Half sizes 8.5-11.5



NEW STYLES

AERO-TAC™

WHEN THE SHIFT GETS REAL

THIS BOOT IS LIGHT AS *#!



EXTREMELY
LIGHTWEIGHT



DURABLE



FREE OF
METALS



ANTI-MICROBIAL
LINING



ORTHOLITE®
COMFORT INSOLES



MOLDED TPU
TOE CAP



EXTREMELY SLIP
RESISTANT

NOW AVAILABLE IN
NEW COLORS & STYLES

